



Mount End, Epping, CM16

BUTLER  STAG



**One of just two luxuriously specified and discreetly positioned homes set on a gated plot of 2 acres, including a private 1.45 acre adjoining paddock, offering serene countryside living within this picturesque development in prime Mount End.**



## **Freehold**

## **Asking Price £1,750,000**

Passingford Barn and Lessington Barn are newly-constructed, four bedroom detached executive homes, offering a gross internal area of approximately 2922 sq.ft. and 2836 sq.ft. respectively.

Here we introduce 'Passingford Barn', a striking detached home set across two floors with an emphasis on luxury and providing breath-taking views of the countryside. Approached via a shared shingled driveway, and commencing with a grand entrance hall leading to the extensive living space.

The internal specification is beyond compare, with a remarkable kitchen and cabinetry, including media walls to the principal areas, dressing room to the principal suite, as well as elegant tiling to the en-suite and Roca sanitaryware. The current layout provides four luxury bedroom suites, each en-suite facilities.

The kitchen incorporates a full range of Siemens appliances and is equipped to the highest of specifications, with a breakfast station, and a central island enhancing this sociable space. Beyond the kitchen you will find a large utility/boot room, boasting the same impressive cabinetry.

This sublime home enjoys plentiful family accommodation, providing enormous living space with feature fireplace including formal lounge and a dining area which are open-plan to the kitchen, with two sets of bi-folding doors providing access to the gardens.

Ample parking is provided to the side and rear, with ample space for several vehicles and a EV charging point.

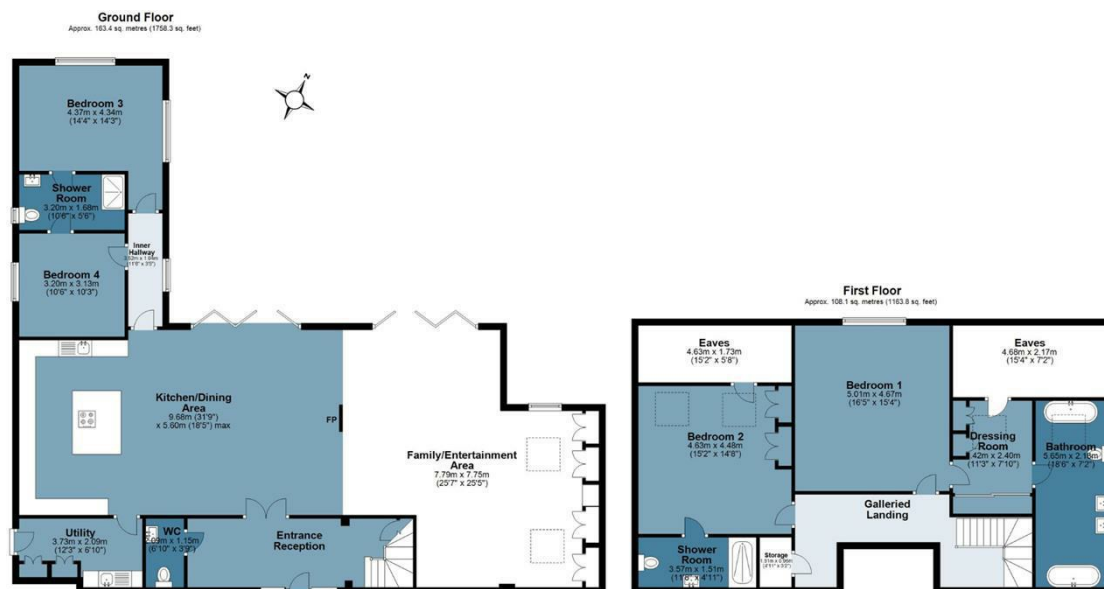
Despite its rural setting, Passingford Barn is very well positioned for easy access to the motorway network via the M25, which links with the M1 (for the north), and the M11. Theydon Bois Station is also 2 miles away with London Underground (Central Line)



## PassingfordBarn

Approx. Gross Internal Area 271.5 sq. metres ( 2922.1 sq. feet)

BUTLER & STAG



Measurements are approximate and for illustration purposes only. While we do not doubt the accuracy and completeness, we advise you conduct a careful independent assessment of the property to determine monetary value  
© @modephoto.uk www.modephoto.co.uk

Prepared on behalf of Butler & Stag  
Land and New Homes

If you have any further questions  
please don't hesitate to contact us on  
the details below

BUTLER & STAG

☎ 020 4542 2999

🏠 Unit 6 Buckingham Court Rectory Lane, Loughton,  
Essex. IG10 2QZ

✉ enquiries@butlerandstag.com

www.butlerandstag.uk

IMPORTANT NOTICE - These particulars have been prepared in good faith and they are not intended to constitute part of an offer or contract. We have not performed a structural survey on this property and the services, appliances and specific fittings have not been tested. All photographs, measurements, floor plans and distances referred to are given as a guide and should not be relied upon.